





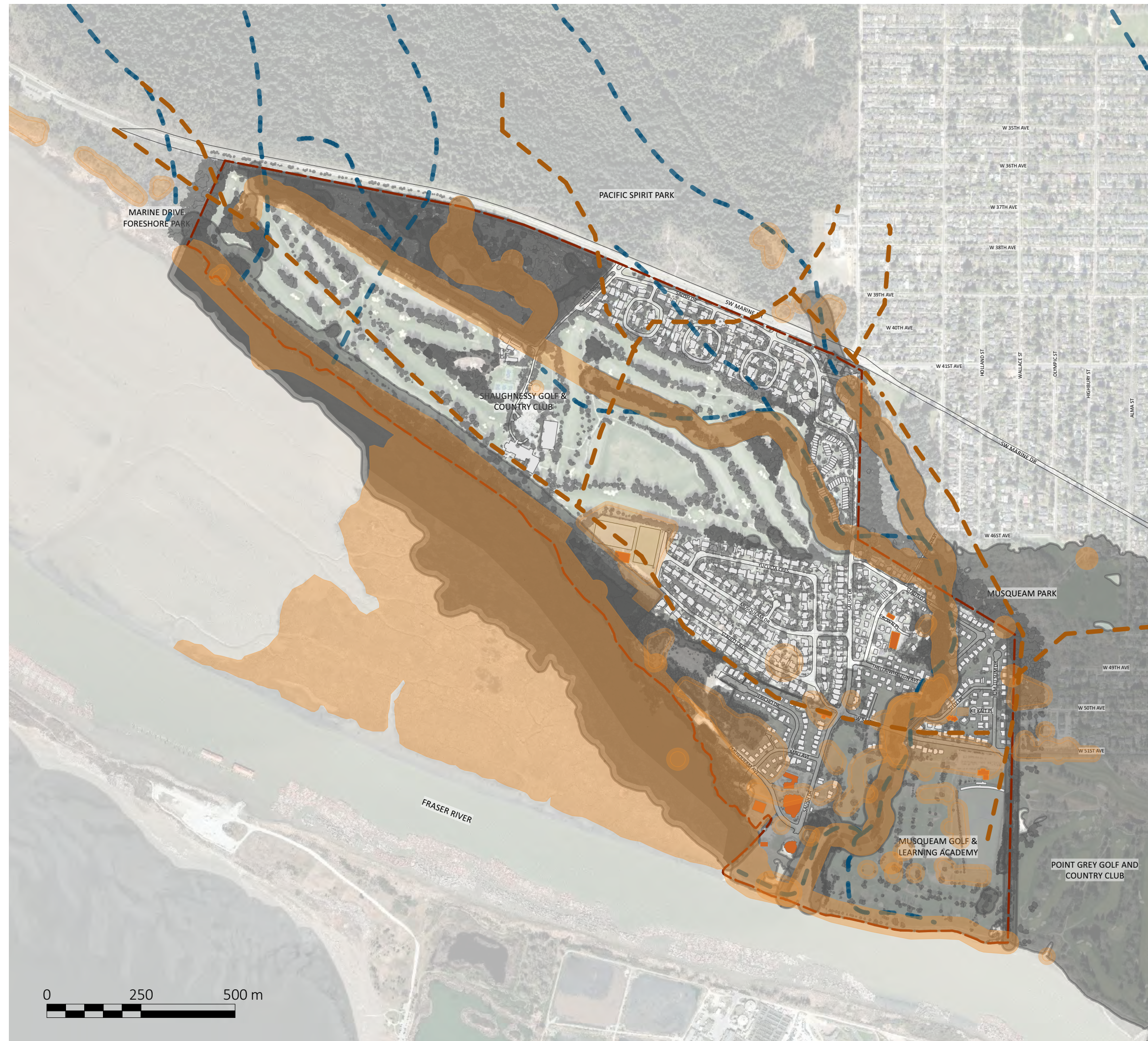
LEGEND	
	Cultural & Heritage Sensitive Sites
	Historic Streams
	Historic Trails
	Community Facilities and Amenities
Source: Musqueam Indian Band 2022 Projection: NAD 1983 UTM Zone 10N	

MIB IR2 MP | AGGREGATE CULTURALLY SIGNIFICANT PLACES

Musqueam Indian Band | April, 2022



AGGREGATE CULTURALLY SIGNIFICANT PLACES



LEGEND

- Single Environmental Feature
- Multiple Environmental Features
- Cultural & Heritage Sensitive Sites
- Historic Streams
- Historic Trails
- Community Facilities and Amenities

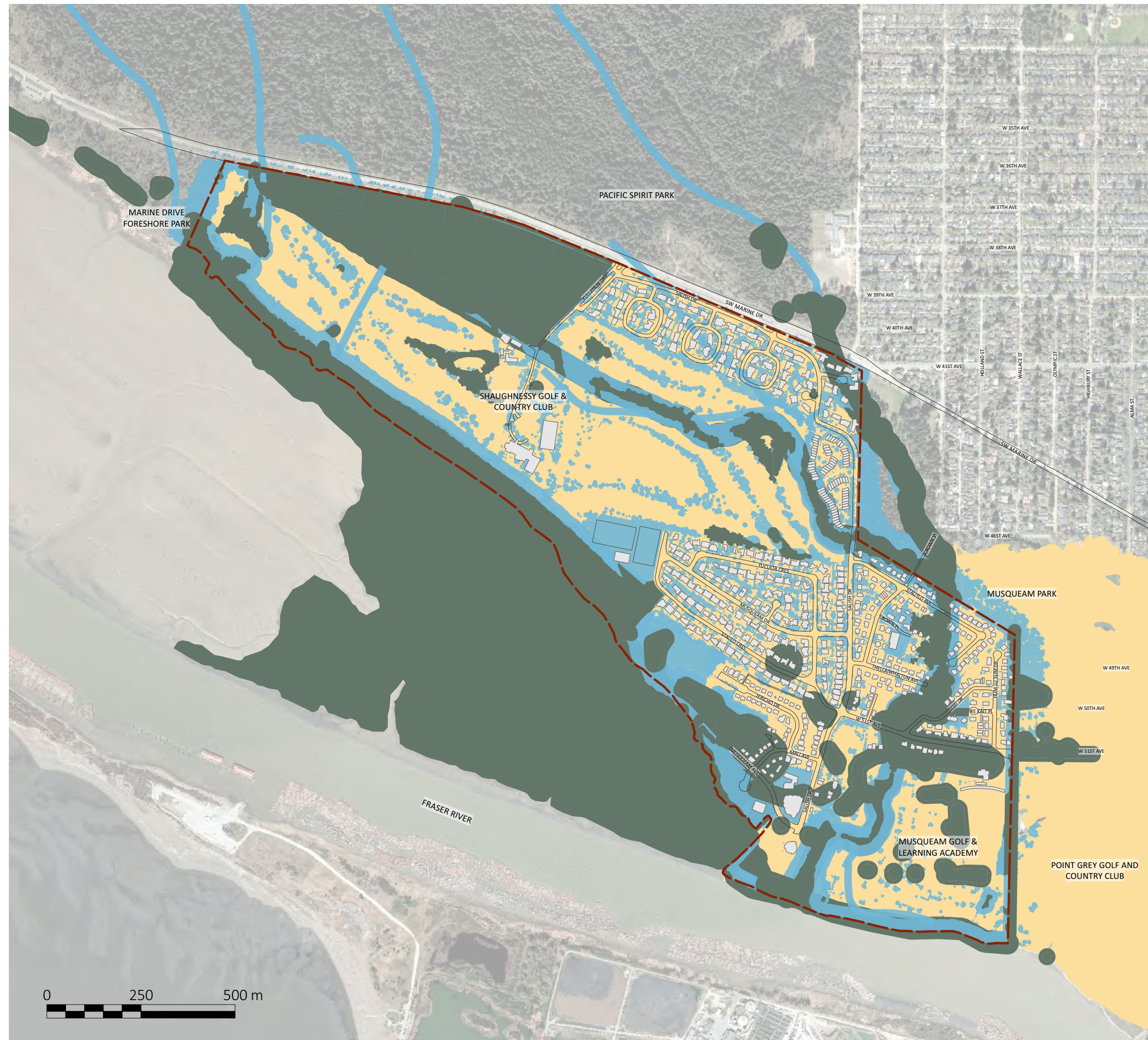
Source: Musqueam Indian Band 2022, Diamond Head Consulting 2021, City of Vancouver 2014, PWL Partnership 2022
 Projection: NAD 1983 UTM Zone 10N

MIB IR2 MP | AGGREGATE KEY ECOLOGIES AND CONDITIONS

Musqueam Indian Band | April, 2022



AGGREGATE KEY ECOLOGIES



LEGEND

- PLACES TO PROTECT AND MANAGE:**

Protect and manage natural systems to secure existing benefits.

 - High value habitat
 - Moderate value habitat
 - Streams, watercourses, and wetlands
 - Stream and riparian setback areas
 - Tall trees over 40m
 - Heritage sensitive sites
 - Waterfowl habitat

- PLACES TO RESTORE, REHABILITATE, AND ENHANCE:**

Restoration and rehabilitation of ecosystems to enhance their performance, functioning, and benefits. Enhance and strengthen benefits provided by existing green spaces and green corridors through design.

 - Low value habitat
 - Stream and riparian setback areas to be restored
 - Historic streams
 - Historic trails
 - Community facilities and parks
 - Tree canopies

- PLACES TO CREATE:**

Create new systems that mitigate climate impacts and strengthen community resilience.

 - Flood plain (mitigation strategies)
 - Contaminated soils (bioremediation and phytoremediation measures)
 - Construct new open green spaces
 - Plant new forest areas
 - Expand the existing tree structure
 - Construct new bioretention areas
 - Introduce constructed wetlands

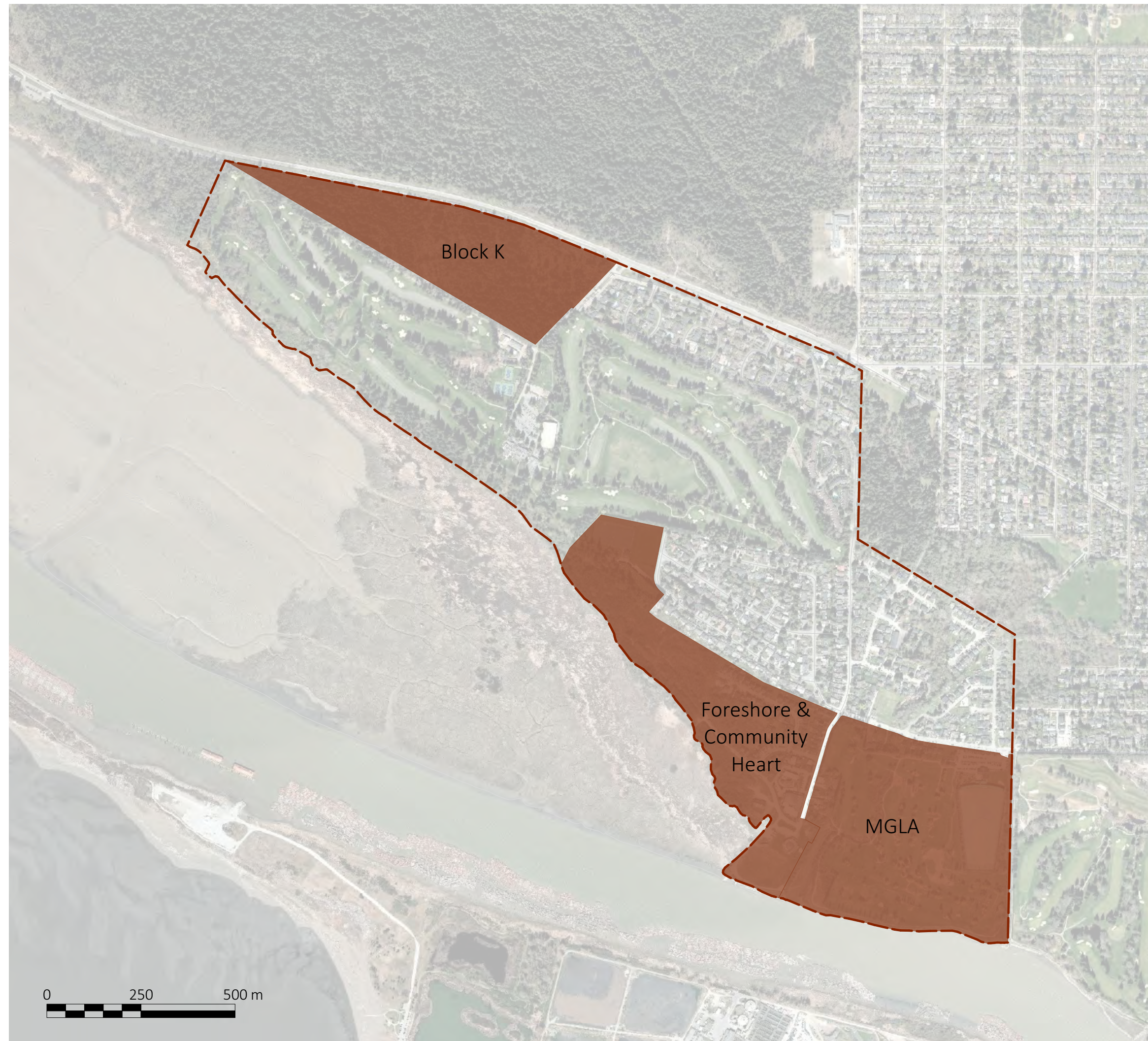
Source: Musqueam Indian Band 2022, Bunt & Associates 2022, City of Vancouver 2015, UBC 2022, Diamond Head Consulting 2021, PWL Partnership 2022
 Projection: NAD 1983 UTM Zone 10N



ECOLOGICAL LAND STRATEGY

TODAY'S GENERATION

Timeline: Developable Today
Population: approx 1600



Source: Musqueam Land Use Plan 2014
Projection: NAD 1983 UTM Zone 10N



IN 1 GENERATION

Timeline: 2032 (lease expiry)
Projected Population: 3,000

