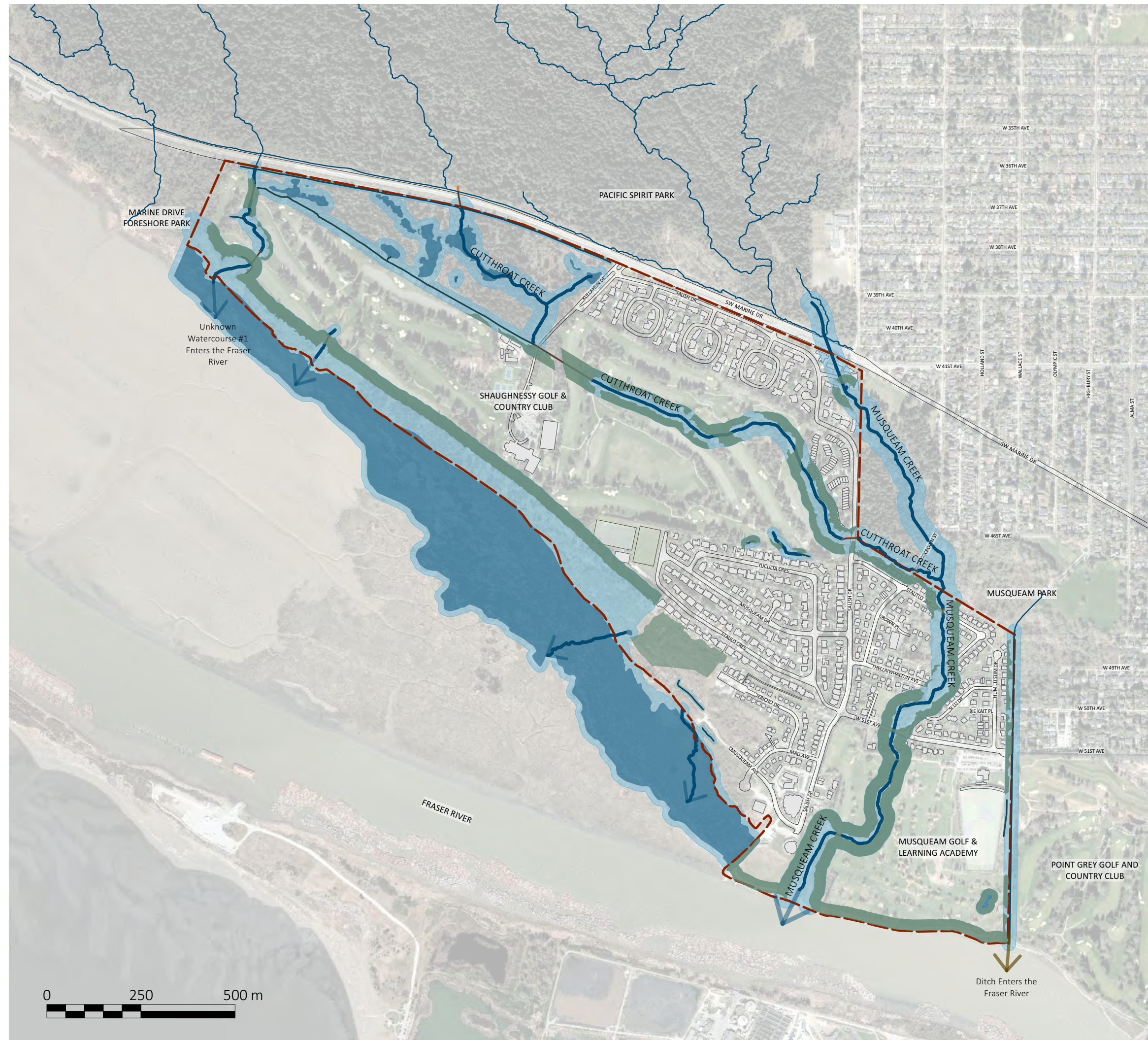


MIB IR2 MP | STORY & LAND

Musqueam Indian Band | April, 2022



STORY & LAND






LEGEND	
	Recommended Setback (Natural)
	Recommended Setback (Restored)
	Wetlands and Ponds
	Potential Wetlands
	Stream
	Ditch
	Culvert
Source: Diamond Head Consulting 2021 Projection: NAD 1983 UTM Zone 10N	

32.7%
of riparian setback
identified for
restoration



STREAM, WETLANDS & SETBACK AREAS



LEGEND	
	Deciduous Trees
	Coniferous Trees
	Tall Trees (over 40m)
Source: Diamond Head Consulting 2021 Projection: NAD 1983 UTM Zone 10N	

37%
canopy cover over
IR2

Block K covers
9.7%
of IR2



TREE CANOPY COVER



LEGEND

High Habitat Value
large and intact natural forests with a diversity of habitat features including access to water and refuge areas.

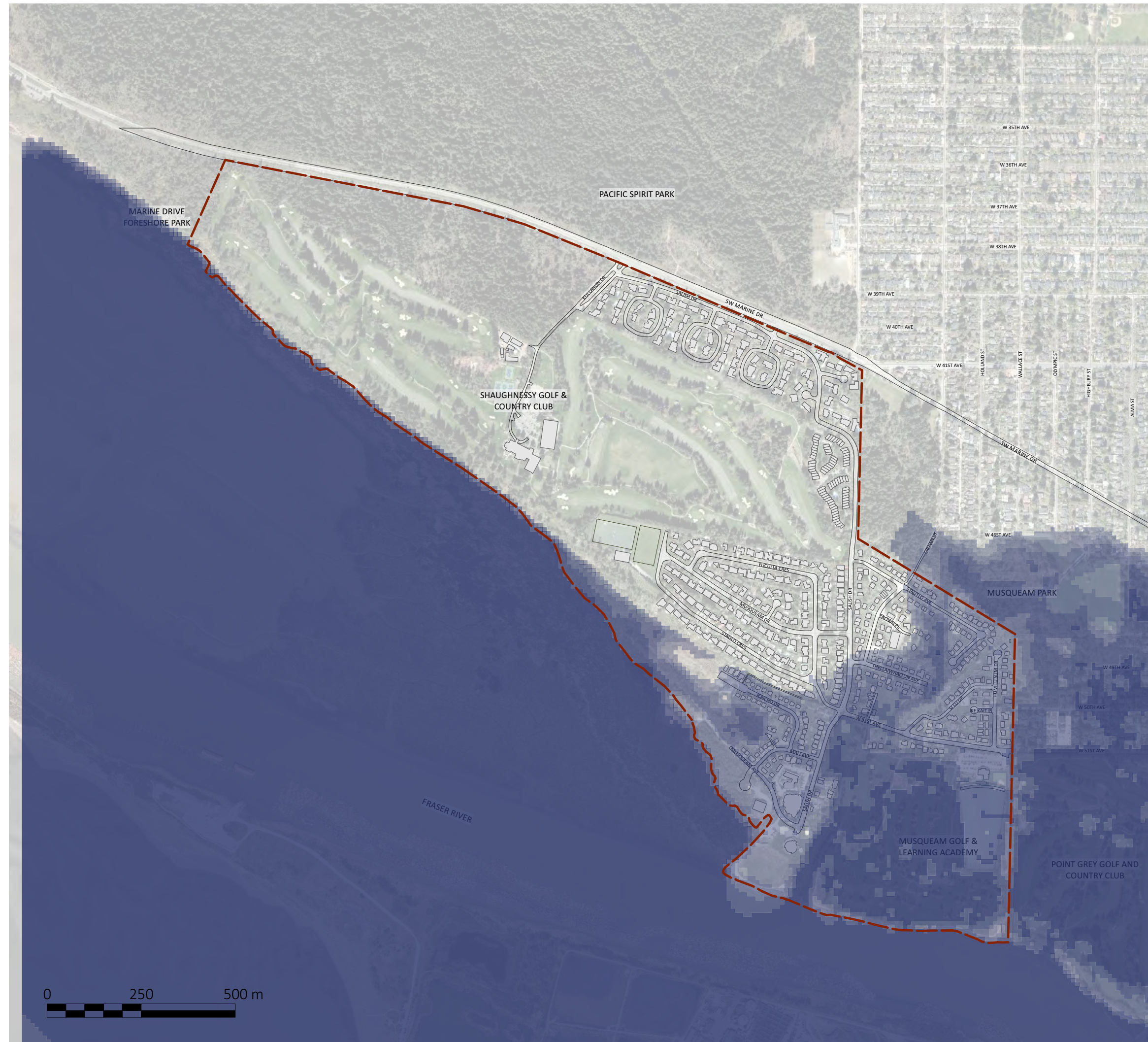
Moderate Habitat Value
small to moderately sized areas with some disturbances including encroachment of urban development and infestations of invasive species.

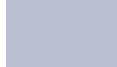




Low Habitat Value
highly disturbed sites that are small in size and have a low diversity of habitat, typically young forests with high infestations of invasive plants.

Source: Diamond Head Consulting 2021
 Projection: NAD 1983 UTM Zone 10N



WILDLIFE HABITAT VALUE

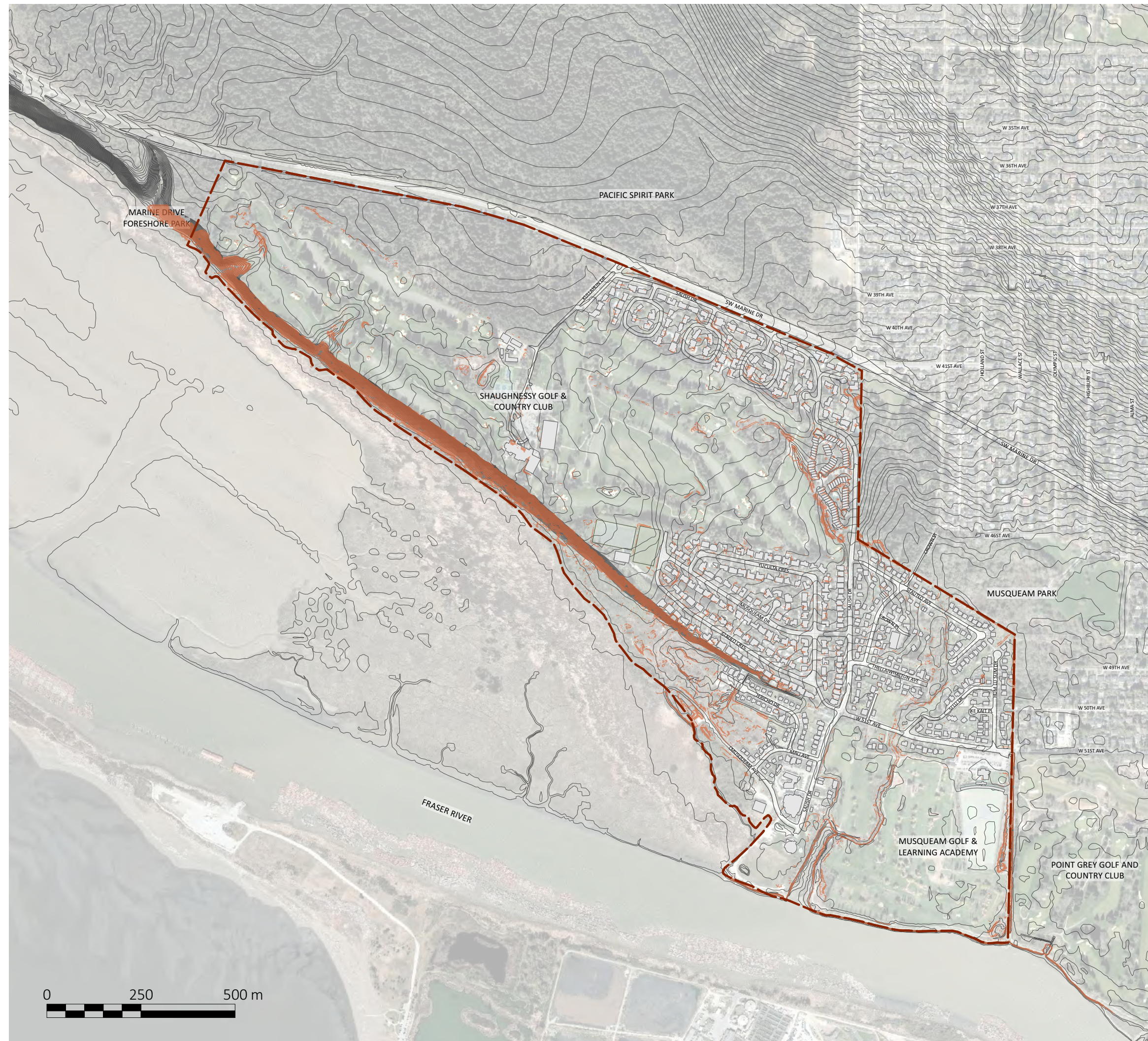



LEGEND	
	4.6 - 5.5m
<i>Potential loss of total IR2 land to flooding up to 5.5m in elevation = 32%</i>	
	3.6 - 4.5m
	2.6 - 3.5m
	1.6 - 2.5m
	Less than 1.5m
<small>Source: Musqueam Indian Band 2011, Ker Wood Liedal Associated Ltd. 2022 Projection: NAD 1983 UTM Zone 10N</small>	

Potential loss of total IR2 land to flooding up to 5.5m in elevation = 32%



FLOODPLAIN



LEGEND	
	Steep Slopes (over 30%)
	1m Contour Lines
Source: City of Vancouver 2021, Ker Wood Liedal Associated Ltd. 2022 Projection: NAD 1983 UTM Zone 10N	

MIB IR2 MP | STEEP SLOPES (POSSIBLE EROSION - REFER TO ENVIR REPORT)

Musqueam Indian Band | April, 2022



STEEP SLOPES